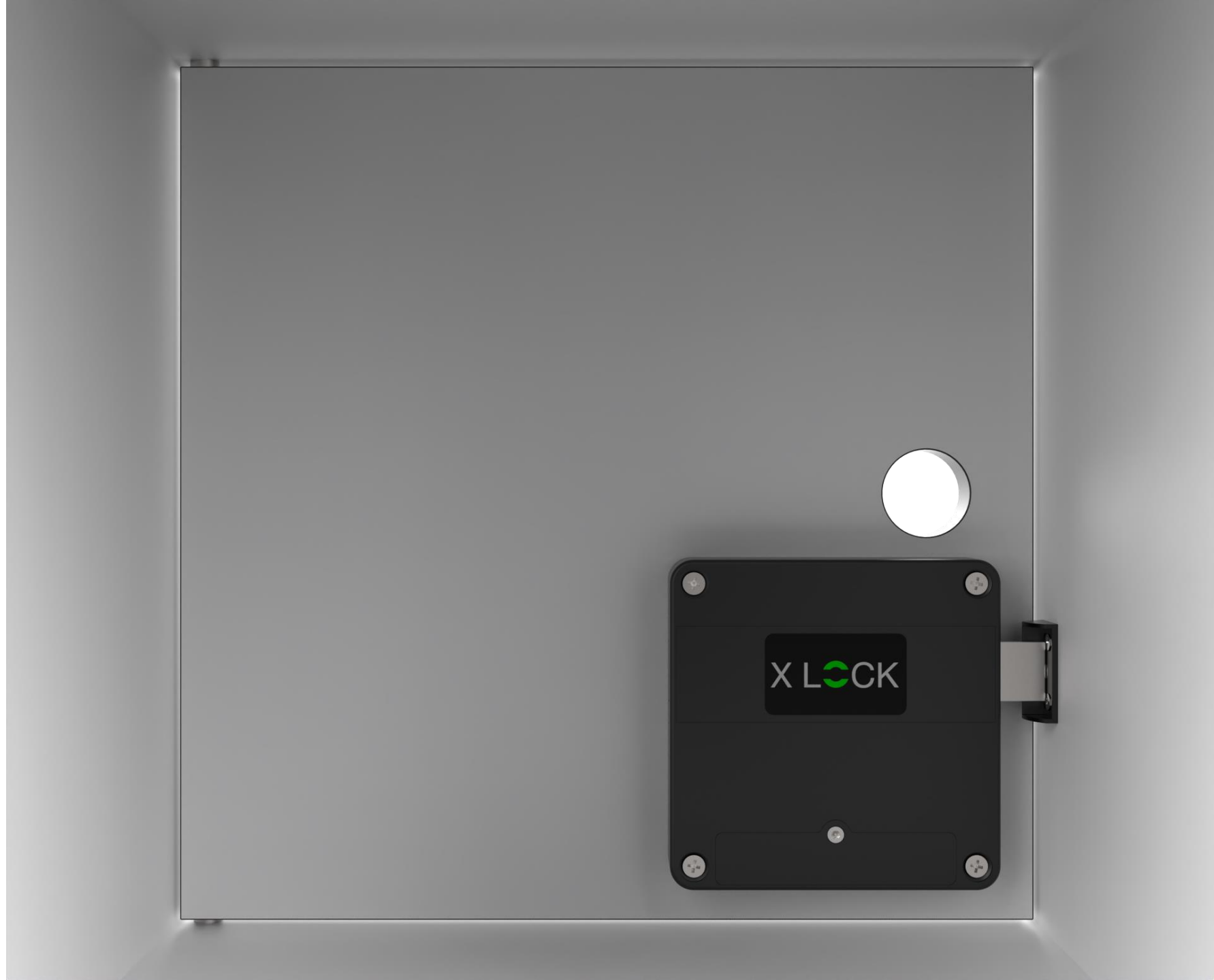


XLOCK 40

Mifare Flex

INSTALLATION GUIDE

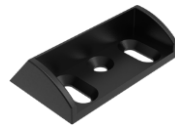


PACKAGING CONTENT

Lock
XL40



Closing part
XL-S17



4x 3,5 x 35mm countersunk screw



3x 2,5 x 12 mm countersunk screw

Attention:

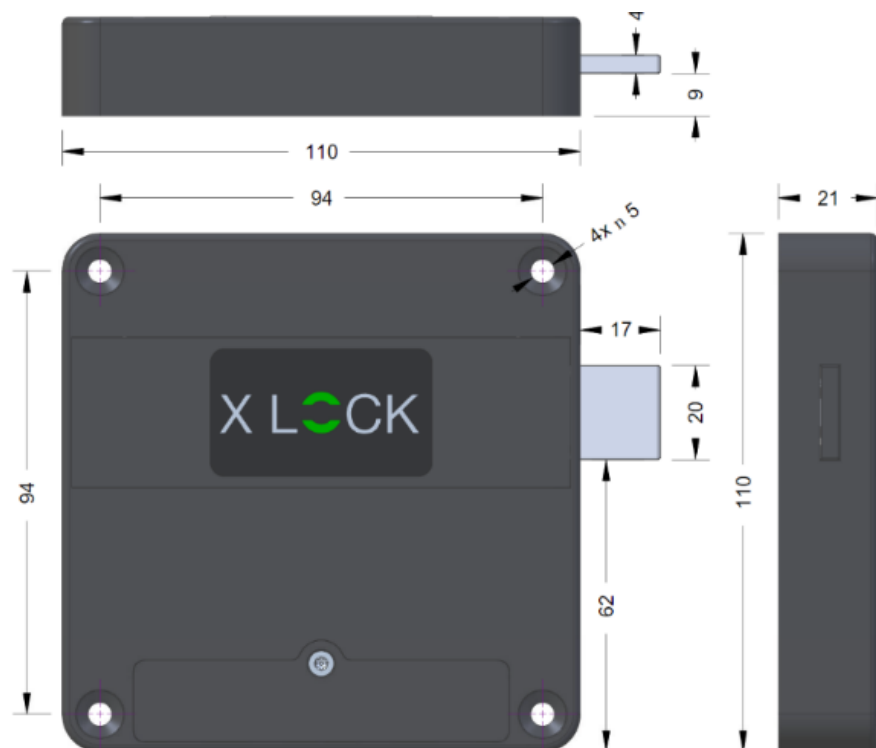
Please order batteries seperately



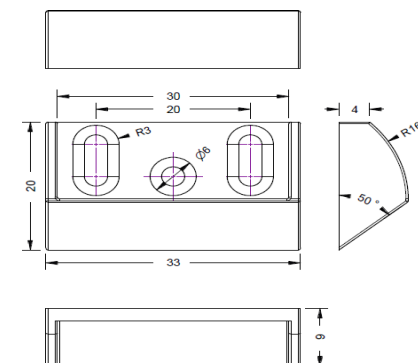
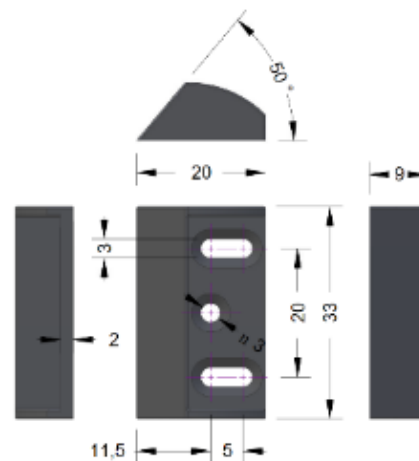
CR123A, 3V lithium battery
Always use lithium batteries!

DIMENSIONS

Lock
XL40



Closing part
XL-S17



XLOCK 40 INVISIBLE INSTALLATION – ANTENNE EMBEDDED (Mifare® Classic & Mifare® Desfire)

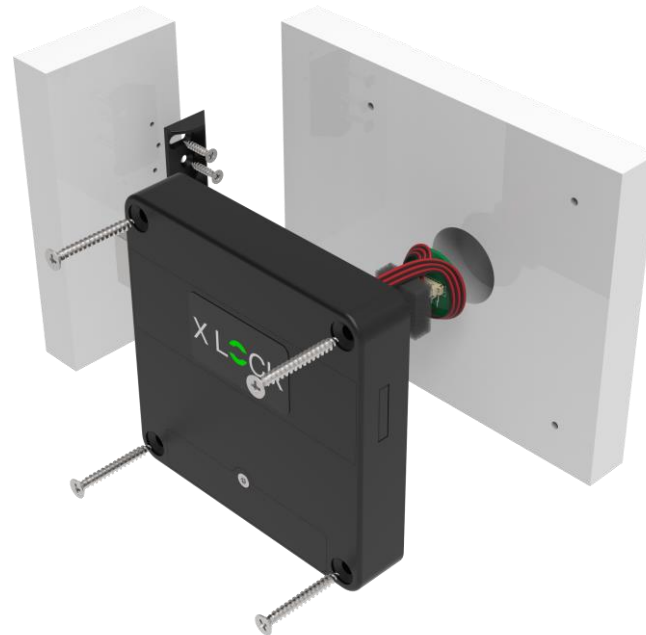


Important!

The reader distance depends on the material of the door and the transponder. In case of concealed installation, the reading distance must be checked before mounting.

For EM4102 badges up to 3.5 cm, for EM4102 key fobs up to 3 cm. Please always check the reading range!

XLOCK 40 INVISIBLE INSTALLATION – ANTENNE EMBEDDED (Mifare® Classic & Mifare® Desfire)



Important!

With Mifare® Desfire transponders, the reading range is weak.

Therefore, the antenna must be embedded in the door, or an external antenna must be used.



External antenna A3 with casing

Optional ! Please order seperately.



Ideal reading distance



Handle function



Optional with Micro-USB Emergency power supply



Black
XL-A3B



White
XL-A3W



Silver
XL-A3S

External antenna A4 with casing



Ideal reading distance



LED – already used indicator FreeLocker



Optional with labelling



White with labelling
XL-A4W



Black with labeling
XL-A4B



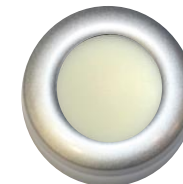
Silver with labeling
XL-A4S



White with frosted glass
XL-A4W



Black with frosted glass
XL-A4B



Silver with frosted glass
XL-A4S

MIFARE TRANSPONDER – TYPES

Optional ! Please order seperately.



Keychain
with Transponder



Wristband
with Transponder



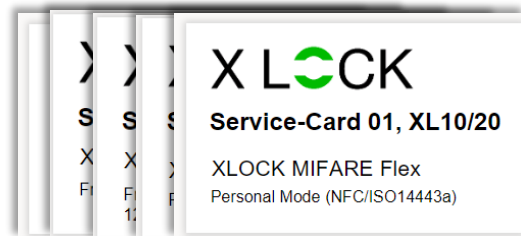
Card
with Transponder

Optional ! Please order seperately.



3 Master Cards

Master cards are unique and will be programmed to each lock for each project/building. These cards are needed to program and delete Service Cards, Emergency Opening Cards and User Transponders. Up to 3 master cards, 5 emergency opening cards and 47 user transponders can be programmed per lock..



Service Card for Personal Mode and Freelocker

With a master card and the service cards 01..... to 10, the lock can be programmed in mode 01.....to mode 10.



Emergency opening Card

A blocked lock can be opened with an emergency opening card - only works with Freelocker Mode 7,8,9 and 10. The lock remains unlocked and can be locked again with the emergency opening card. The user ID that locked the locker remains stored. This means that the user card can open the lock again later.

MifareFlex service cards

X LOCK

Service-Card 01, XL10/20

XLOCK MIFARE Flex
Personal Mode (NFC/ISO14443a)

With a master card and the **service card 01**, the lock can be programmed into **mode 01**. In mode 01 up to 47 transponders (type ISO14443a / NFC) can be programmed per lock. This mode is also called "**Personal Locker**" or "**Fixcode**". The type of locking is called the latch function: Only programmed data carriers can lock and unlock the lock. After an authorised data carrier has been identified, the bolt unlocks and automatically locks again after 4 seconds.

X LOCK

Service-Card 02, XL10/20

XLOCK MIFARE Flex
Personal Mode Toggle (NFC/ISO14443a)

With a master card and the **service card 02**, the lock can be switched to **mode 02** or programmed. In mode 02, up to 47 transponders (type ISO14443a / NFC) can be programmed per lock. This mode is also called "**Personal Locker**" or "**Fixcode**". The type of locking is called the locking function: After an authorised data carrier has been identified, the bolt moves to the open position and remains in this position. The next time an authorised data carrier is identified, the latch moves to the closed position and remains in this position.

X LOCK

Service-Card 07, XL30/60

XLOCK MIFARE Flex
Freelocker Mode (Mifare Classic S.10)

With a master card and the **service card 07**, the **Freelocker Mode 07 R/W - sector 10 (free locker selection)** can be activated. In addition, "locker occupied" is written on the transponder. The lock is not automatically unlocked. The lock remains locked.

! Only works with Mifare 4 byte type Classic 1K / and Mifare Classic 4 K transponders !

X LOCK

Service-Card 08, XL30/60

XLOCK MIFARE Flex
Freelocker Mode (Mifare Classic S.10)
12 ⌚ Automatik

With a master card and the **service card 08**, the **Freelocker mode 08 R/W - sector 10 (free locker selection)** can be activated. In addition, "locker occupied" is written on the transponder. The lock is automatically unlocked XX hours after the last booking.

! Only works with Mifare 4 byte type Classic 1K / and Mifare Classic 4 K transponders !

MifareFlex service cards

X LOCK

Service-Card 09, XL30/60

XLOCK MIFARE Flex

Freelocker Mode (NFC/ISO14443a)

Freelocker Mode 09 R/W can be activated with a master card and **service card 09**. No information is written to the transponder. The lock is not automatically unlocked. The lock remains locked.

! Mifare Classic 1K (4 + 7 bytes) and Mifare Classic 4K (4 + 7 bytes), Mifare DesFire EV1, Mifare light, LEGIC® advant ATC2048 and ATC4096, NFC (ISO 14443a) can be used !

X LOCK

Service-Card 10, XL30/60

XLOCK MIFARE Flex

Freelocker Mode (NFC/ISO14443a)

12 ⌚ Automatik

Freelocker Mode 10 R/W can be activated with a master card and **service card 10**. No information is written to the transponder. The lock is automatically unlocked XX hours after the last booking.

! Mifare Classic 1K (4 + 7 bytes) and Mifare Classic 4K (4 + 7 bytes), Mifare DesFire EV1, Mifare light, LEGIC® advant ATC2048 and ATC4096, NFC (ISO 14443a) can be used !

VIEW MOUNTING LEFT AND RIGHT

LEFT



RIGHT



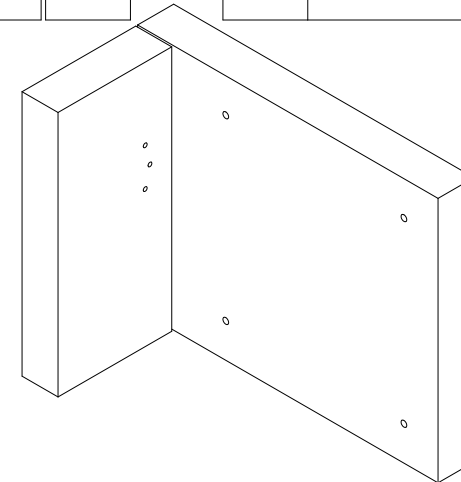
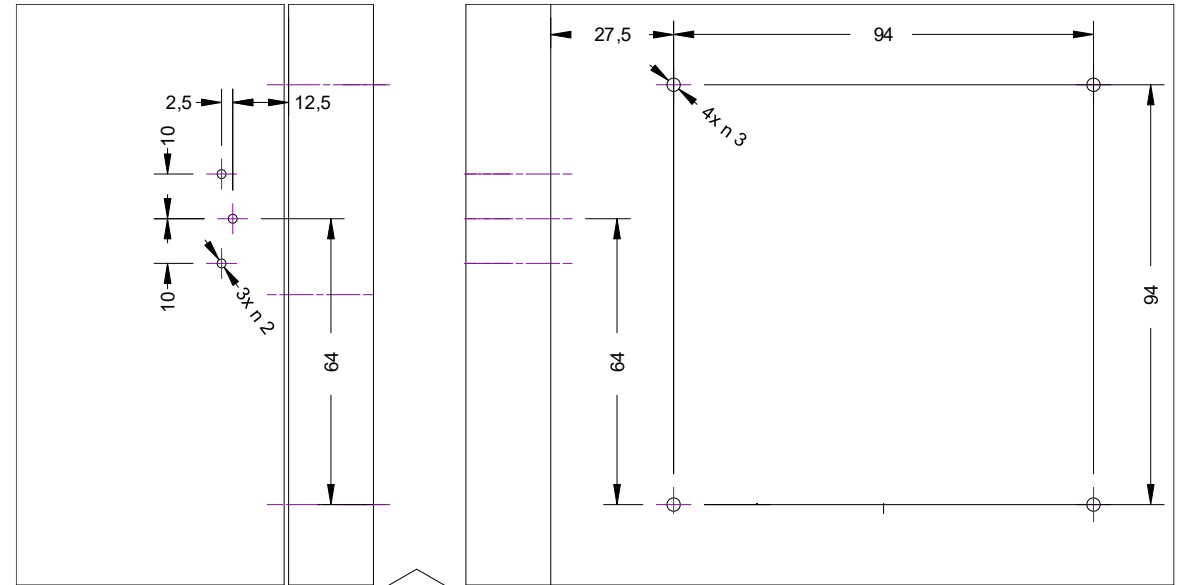
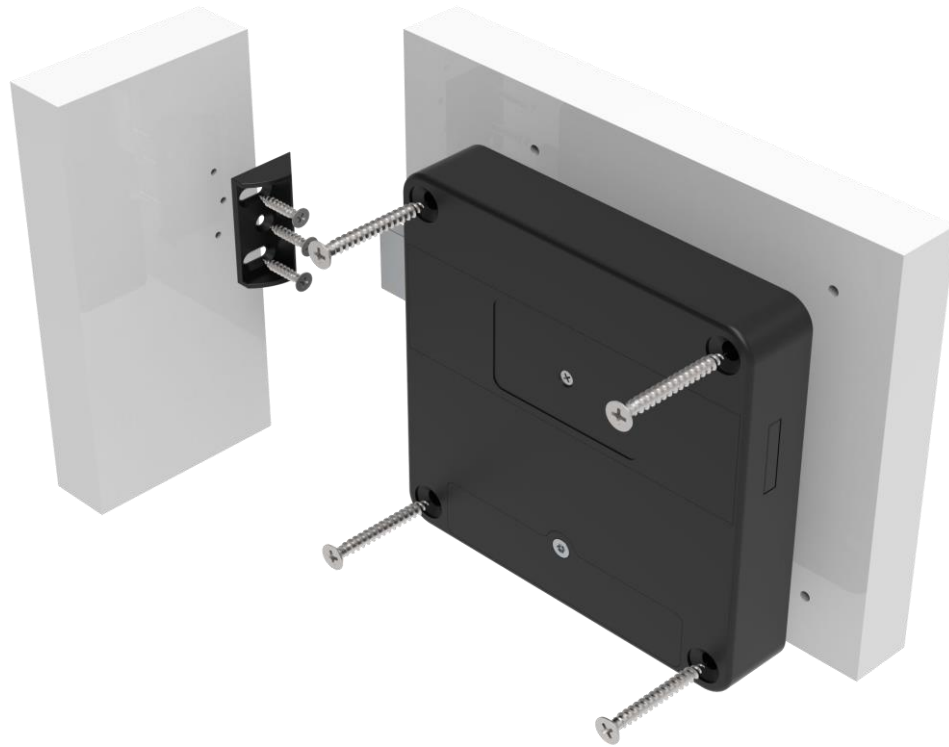
Please mention when ordering!



Attaching the lock
Tighten the screws with care and avoid
using a drill or cordless screwdriver

XLOCK 40 INSTALLATION LEFT

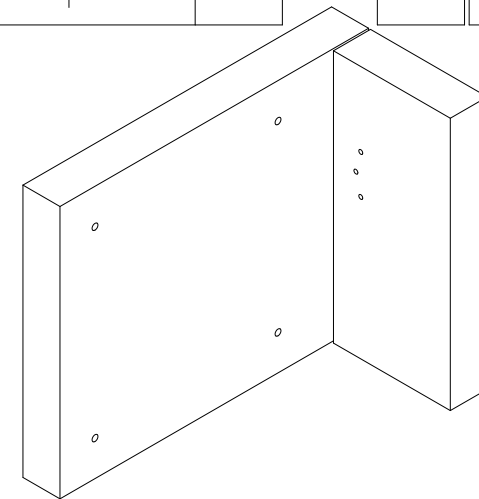
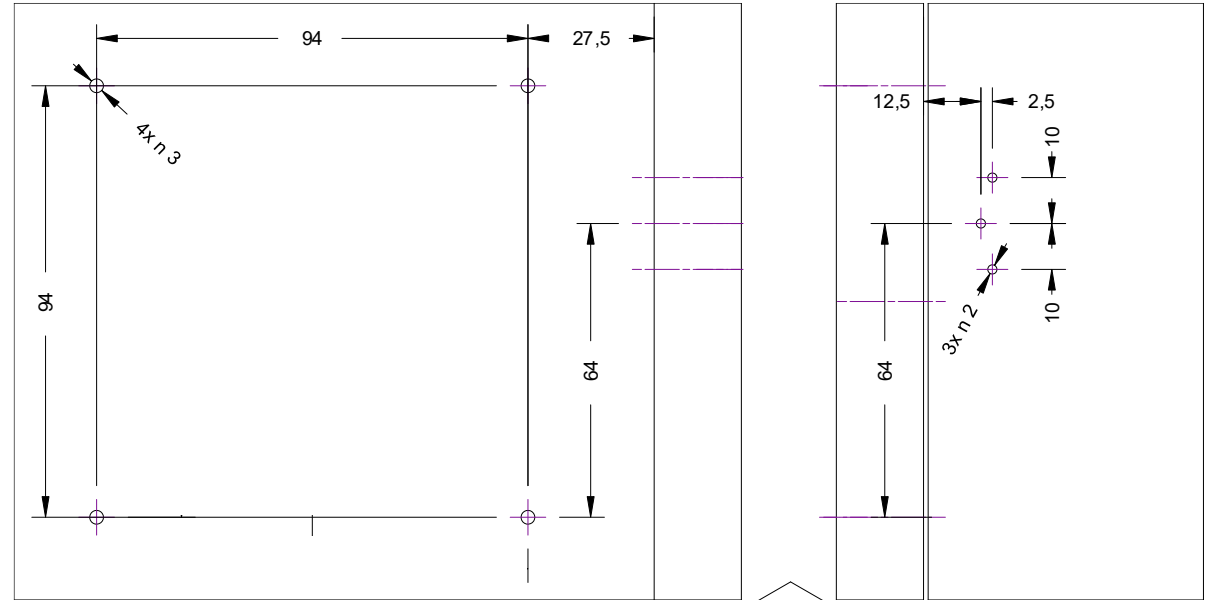
Installation LEFT



Attaching the lock
Tighten the screws with care and avoid
using a drill or cordless screwdriver

XLOCK 40 INSTALLATION RIGHT

Installation RIGHT



Attaching the lock
Tighten the screws with care and avoid
using a drill or cordless screwdriver

Inserting battery / removing battery strip

- 1) Remove battery strip = system active and the RFID field is activated.
- 2) Avoid overlapping reading field of the locks, otherwise the battery will be discharged quickly.
- 3) Do not activate batteries before installation.
- 4) Always isolate or remove batteries for transport!



CR123A, 3V lithium battery

Always use lithium batteries!



Open the battery compartment cover and insert the batteries with the correct polarity (+/-).



Battery inserted with correct polarity -> system and RFID field is activated



Close the battery compartment cover and fix it with the screw. Your lock is now ready for operation

Otherwise

If you ordered the locks With the battery



Battery strip is pulled out -> system and RFID field is activated



ACTIVATION – teach in master cards

Reset the lock to the factory settings. This step is not necessary if the locks have never been programmed.



Long audio signal



Press the reset button on the back of the lock **gently** for **3 seconds**.

Important:

If the reset button is only pressed briefly, the sound is switched off = short signal. If this happens, the reset button must be pressed again briefly = long tone, tone on



1. master card is held up to the antenna field



ticks for approx. 5 seconds



Hold the 2. master card to the antenna field while it is ticking.



ticks for approx. 5 seconds



Hold the 3. master card to the antenna field while it is ticking

ACTIVATION – service cards and users – teach in transponders



Teach in service cards

Hold the **master card** to the antenna field



ticks for approx.
5 seconds



Hold the **service card** against the antenna field, while it is ticking



User Transponder
teach in only possible in
mode 1 or 2

Hold the **master card** to the antenna field



ticks for approx.
5 seconds



Hold the **Transponder** against the antenna field, while it is ticking.

Emergency opening card programming (Mode 7, 8, 9 & 10)

Emergency opening card programming
(Mode 7, 8, 9 & 10)



Hold the master card against the antenna field



ticks for approx.
5 seconds



While ticking, hold the emergency opening card against the antenna field. Repeat the procedure for further emergency opening cards.

A maximum of 5
emergency opening cards
can be programmed in
Freelocker mode



Emergency opening
with an emergency
opening card



Hold the master card against the antenna field



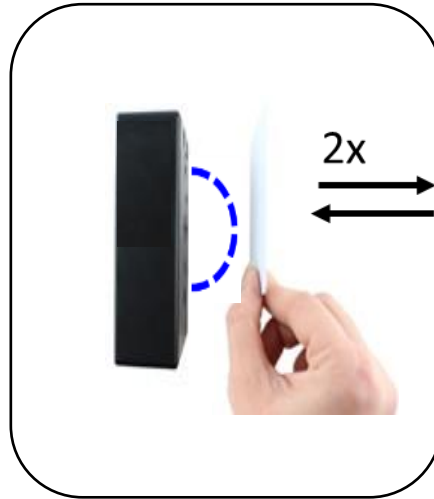
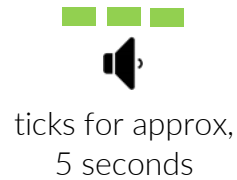
The emergency opening card can be used to unlock and lock the lock (open/close mode).

The latch retracts -> the lock is unlocked.*When you hold the emergency card against the antenna field a second time, the lock locks again.

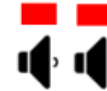
Emergency opening with programming card (general)



Hold programming card against the antenna field



Hold the programming card against the antenna field 2 more times while ticking



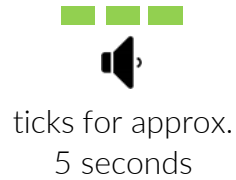
The latch retracts -> **lock unlocked - no longer hold the card towards the antenna field.**

Attention:

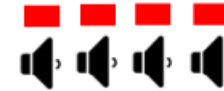
After the lock has been unlocked, the master card should no longer be held up against the antenna field. Otherwise, all master cards will be deleted and must be relearned.

Delete user Transponder

User Transponder individually deleting



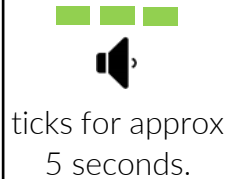
ticks for approx. 5 seconds



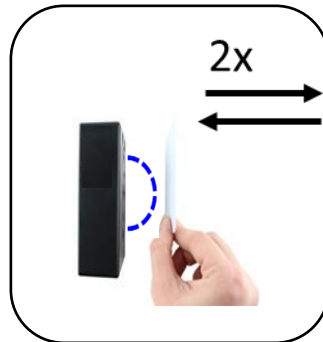
Hold the programming card to the antenna field

While it is ticking, hold the transponder up to the antenna field.

All Users Transponder Deleting

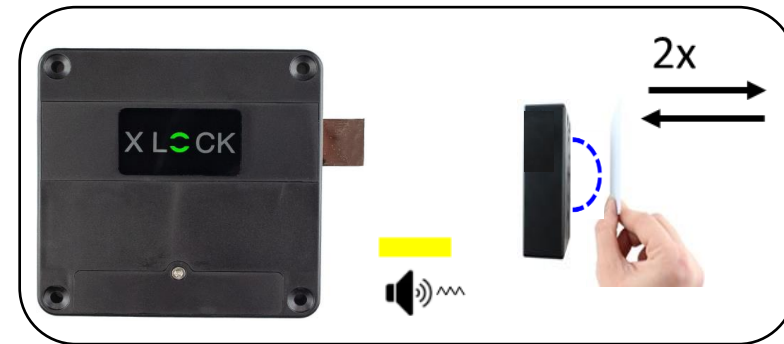


ticks for approx 5 seconds.



Hold the programming card to the antenna field

Hold the programming card against the antenna field 2 more times while ticking.



The latch retracts -> lock unlocked.

Hold the programming card against the antenna field 2 more times while it is ticking. **Remove the card from the antenna field.**

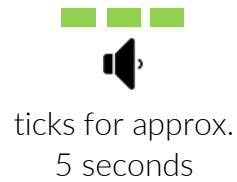
Attention:

Do not hold the master card to the antenna field anymore. Otherwise, all master cards will be deleted and must be taught in again.

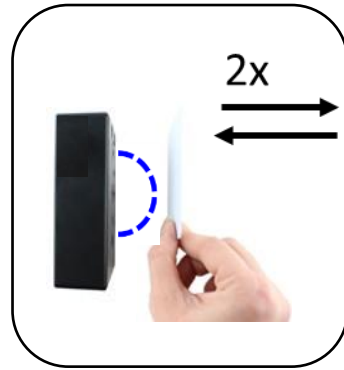
Deleting all master cards



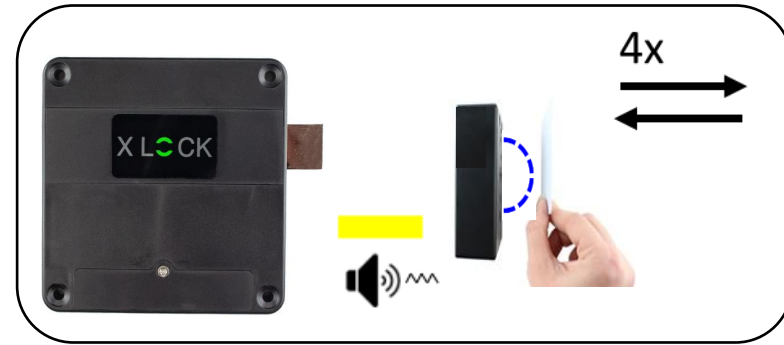
Hold the programming card to the antenna field.



ticks for approx. 5 seconds



Hold the programming card against the antenna field 2 more times while ticking.



The latch retracts -> lock unlocked.

Hold the programming card against the antenna field 4 times while ticking.



The master cards are deleted after a long beep.

The lock then waits to be programmed with new master cards

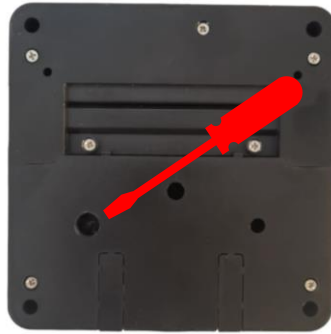
User Transponders are still saved on the lock



Attention: After deleting the master cards, the lock waits for new programming cards. 1-3 new programming cards must be taught-in!

Reset button | all functions

Switching sound on and off



Reset button is pressed briefly for 1 second -> sound on.



Reset button is briefly pressed once for 1 second -> sound off.



Resetting the lock completely



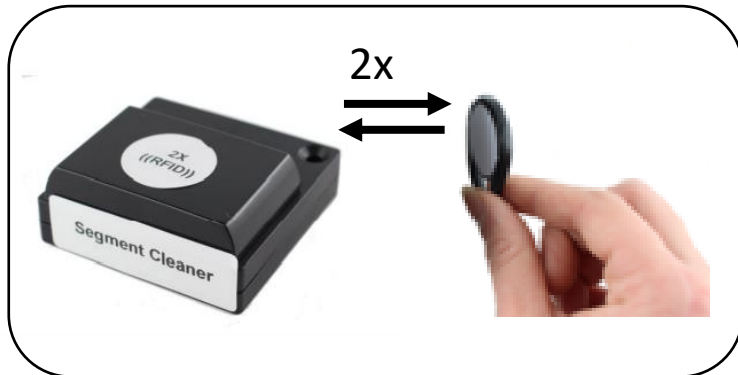
Press the reset button for 3 seconds until a signal sounds.

Important: After a reset, the mode of the lock remains stored.



Optional ! Please order seperately.

Delete the **Freelocker** segment on the transponder: The **Segment Cleaner** can be used to delete the locker number and "Locker locked" on the transponder.



The transponder is held up to the antenna field 2 times.
-> Cabinet number deleted

Optional ! Please order seperately.

If the user has forgot which of the lockers he locked, the locker number can be checked at the info terminal.

To do this, a Mifare Classic transponder (Mifare Classic 1K / Mifare Classic 4K) is held up to the RFID field of the info terminal (see picture).

locking the lock - the cabinet number is saved on the transponder



1. Hold the transponder against the antenna field to lock it.



2. The segment (Sector 10) now contains the cabinet number



3. Hold the transponder against the terminal. The display now shows that the cabinet with the number 2 is occupied.

Unlock lock - locker number is deleted



1. Hold the transponder to the antenna field for unlocking



2. Cabinet number has been deleted on the segment (Sector 10). No more cabinet number on the transponder



3. Read out the locker number on the info terminal. No locker is occupied.

XLOCK

More information and support at
www.xlockgroup.com

XLOCK by data mobile

Landstrasse 35-39

AUT - 6911 Lochau

info@xlockgroup.com

www.xlockgroup.com