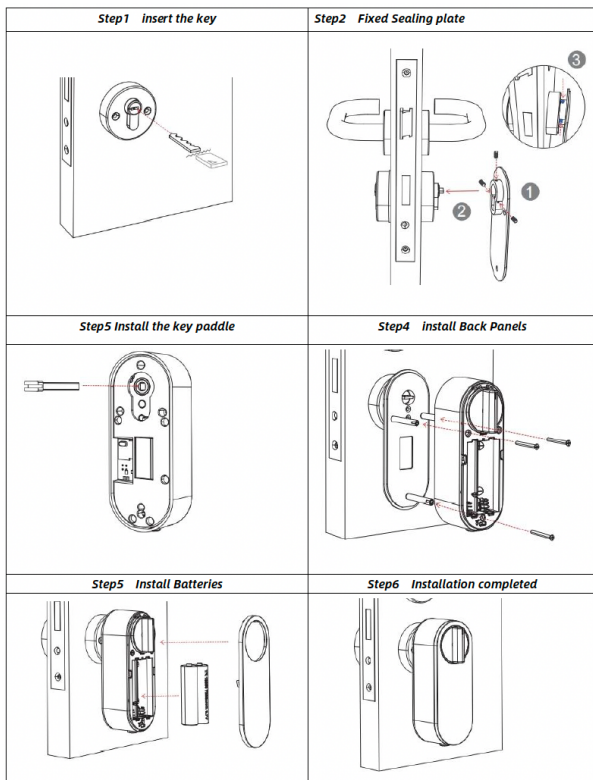


// INCLUDED PARTS

Lock	Bluetooth Keypad 02 Motor Cylinder 10
Mounting	Screws and dowels for mounting, flush-mounting. Mounting materials included.

// IMPORTANT

- The keypad must be mounted on a flat dry surface.




// GUIDES AND MORE



Please scan the QR code with your Smartphone and a website with all the information will open.

If you are working on a PC, you can click on the QR code and a website with all the information will open.

// DISPOSABLE INFO

 According to the European WEEE Directive, electrical and electronic equipment must not be disposed of with household waste. Their components must be recycled or disposed of separately, because toxic and hazardous components can cause lasting damage to health and the environment if disposed of improperly. As a consumer, you are obliged under the Electrical and Electronic Equipment Act (ElektroG) to return electrical and electronic equipment free of charge at the end of its service life to the manufacturer, the point of sale or to public collection points set up for this purpose. Details are regulated by the respective state law. The symbol on the product, the operating instructions and/or the packaging indicates these regulations. By separating, recycling and disposing of old equipment in this way, you are making an important contribution to protecting our environment.

BLE Keypad 02 / MC10



// TECHNICAL DETAILS

Size	Keypad 02: 115,9 x 58,4 x 26,2/20,1 mm MC10: 148,5 x 60,55 x 55,1/41,5 mm
Material	Plastic and Aluminum alloy
Temperature	-10°C to +55°C
Humidity	0% to 95% relative humidity, non-condensing
Power supply	Keypad 02: 1 x Lithium Battery CR123A MC10: 2 x rechargeable 1850 lithium batteries (charger to be ordered separately)
Compatibility	XL Lock Manager App (iOS, Android) Web Interface (www.xlock.app)
Accessibility	Smartphone via Bluetooth, ID Card, PIN Code, Fingerprints
Reading distance	< 25 mm with XLOCK RFID ID cards, other cards or transponders can have a shorter or different reading range. Up to 15m with Bluetooth Low Energy.
Gateway	Compatible (to be ordered separately)
Memory	Unlimited smartphone users via XL Lock Manager App, up to 200 ID cards, up to 150 PIN Codes and 200 Fingerprints
IP class	Front IP 54 - The reader is suitable for outdoor installation, but only in dry areas.

// MAINTENANCE

- Use only a dry and soft cloth for cleaning.
- Do not use any cleaning agents or chemicals.
- Store the product in a cool and dry place.
- Store the product out of reach of children and in a dry and dust-protected environment when not in use for a longer period of time.
- Keep the original packaging for transport.

// PACKAGING



Packaging can be disposed free of charge at the appropriate collection points - paper in the paper garbage can, plastics in the yellow bag and glass in the used glass container.

// SET BEINHALTET

Schloss	Bluetooth Funktastatur 02 Motorausatz 10
Montage	Schrauben und Dübel für die Montage. Inklusive Befestigungsmaterial.

// WICHTIG

- Die Tastatur muss auf einer flachen, trockenen Oberfläche montiert werden.

BLE Funktastatur 02 / MC10



// TECHNISCHE DETAILS

Größe	Keypad 02: 115,9 x 58,4 x 26,2/20,1 mm MC10: 148,5 x 60,55 x 55,1/41,5 mm
Material	Plastik und Aluminiumlegierung
Temperatur	-10°C bis +55°C
Luftfeuchtigkeit	0% bis 95% relative Luftfeuchtigkeit, nicht kondensierend
Stromversorgung	Keypad 02: 1 x Lithium Batterie CR123A MC10: 2 x aufladbare 1850 Lithium Batterien (Ladegerät separat zu bestellen)
Kompatibilität	XL Lock Manager App (iOS, Android) Web Interface (www.xlock.app)
Zugang	Smartphone via Bluetooth, ID Karte, PIN Code, Fingerabdrücke
Leseabstand	< 25 mm mit XLOCK RFID-ID-Karten können andere Karten oder Transponder eine kürzere oder andere Lesereichweite haben. Bis zu 15 m mit Bluetooth Low Energy.
Gateway	Kompatibel (seperat zu bestellen)
Speicher	Unbegrenzte Smartphone-Benutzer über die XL Lock Manager App, bis zu 200 ID-Karten, bis zu 150 PIN-Codes und 200 Fingerabdrücke
IP Klasse	Der Leser ist für die Außenmontage geeignet, jedoch nur im trockenen Bereich

// MAINTENANCE

- Use only a dry and soft cloth for cleaning.
- Do not use any cleaning agents or chemicals.
- Store the product in a cool and dry place.
- Store the product out of reach of children and in a dry and dust-protected environment when not in use for a longer period of time.
- Keep the original packaging for transport.

// GUIDES AND MORE



Please scan the QR code with your Smartphone and a website with all the information will open.

If you are working on a PC, you can click on the QR code and a website with all the information will open.

// DISPOSABLE INFO



According to the European WEEE Directive, electrical and electronic equipment must not be disposed of with household waste. Their components must be recycled or disposed of separately, because toxic and hazardous components can cause lasting damage to health and the environment if disposed of improperly. As a consumer, you are obliged under the Electrical and Electronic Equipment Act (ElektroG), to return electrical and electronic equipment free of charge at the end of its service life to the manufacturer, the point of sale or to public collection points set up for this purpose. Details are regulated by the respective state law. The symbol on the product, the operating instructions and/or the packaging indicates these regulations. By separating, recycling and disposing of old equipment in this way, you are making an important contribution to protecting our environment.

// PACKAGING



Packaging can be disposed free of charge at the appropriate collection points - paper in the paper garbage can, plastics in the yellow bag and glass in the used glass container.